

# Practice Exercise – Bracket

Basic Sheet Metal Exercises, SOLIDWORKS Sheet Metal

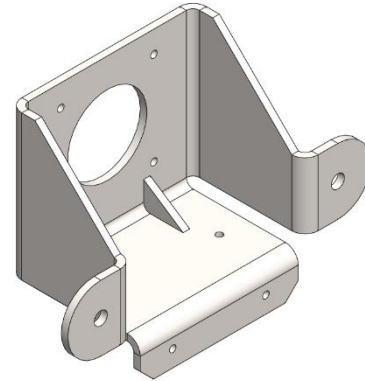


## Summary:

In this exercise, you'll create a sheet metal bracket. You'll use a combination of different flange features to create the base and utilize sheet metal features to finish the part.

## Reference Lessons:

- [Sheet Metal and Flat Pattern Features](#)
- [Base Flange](#)
- [Edge Flange](#)
- [Break Corner](#)
- [Sheet Metal Gussets](#)



## Instructions:

1. Create a new sheet metal part using the following parameters:

Unit System: IPS with a 3-unit decimal precision

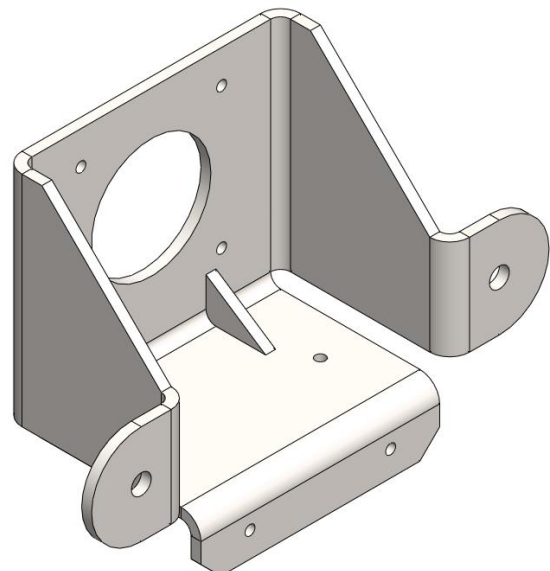
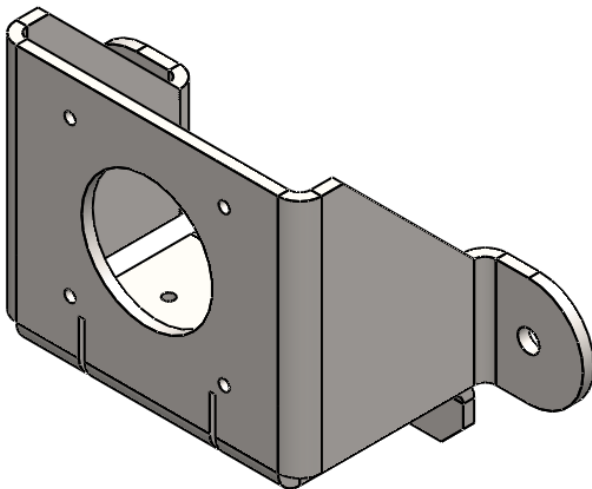
Part Material: Plain Carbon Steel with density 0.282 lb/in<sup>3</sup>

Sheet Metal Thickness = 0.125in

Inner Bend Radius = 0.125in

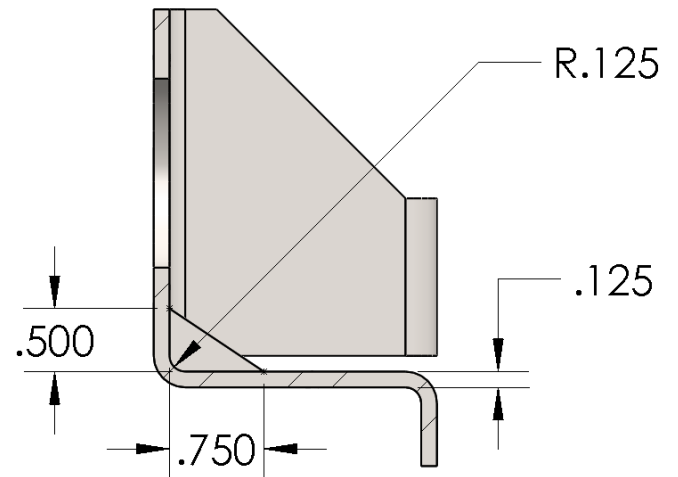
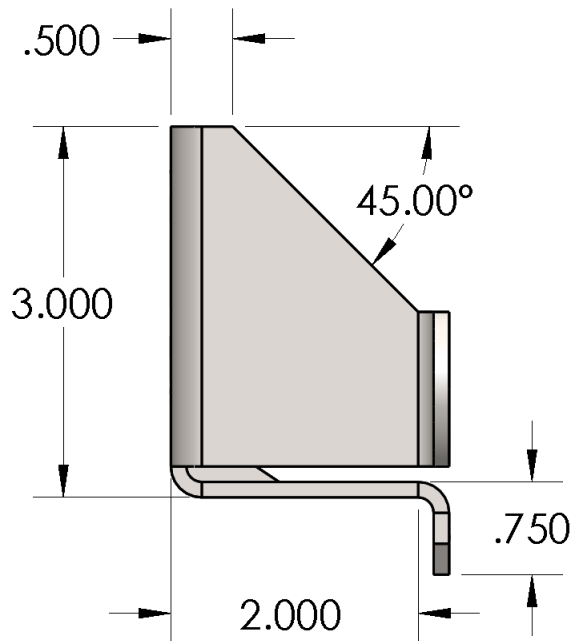
NOTE: The part is symmetric about the Front Plane.

2. Create the Bracket using the drawing views below.

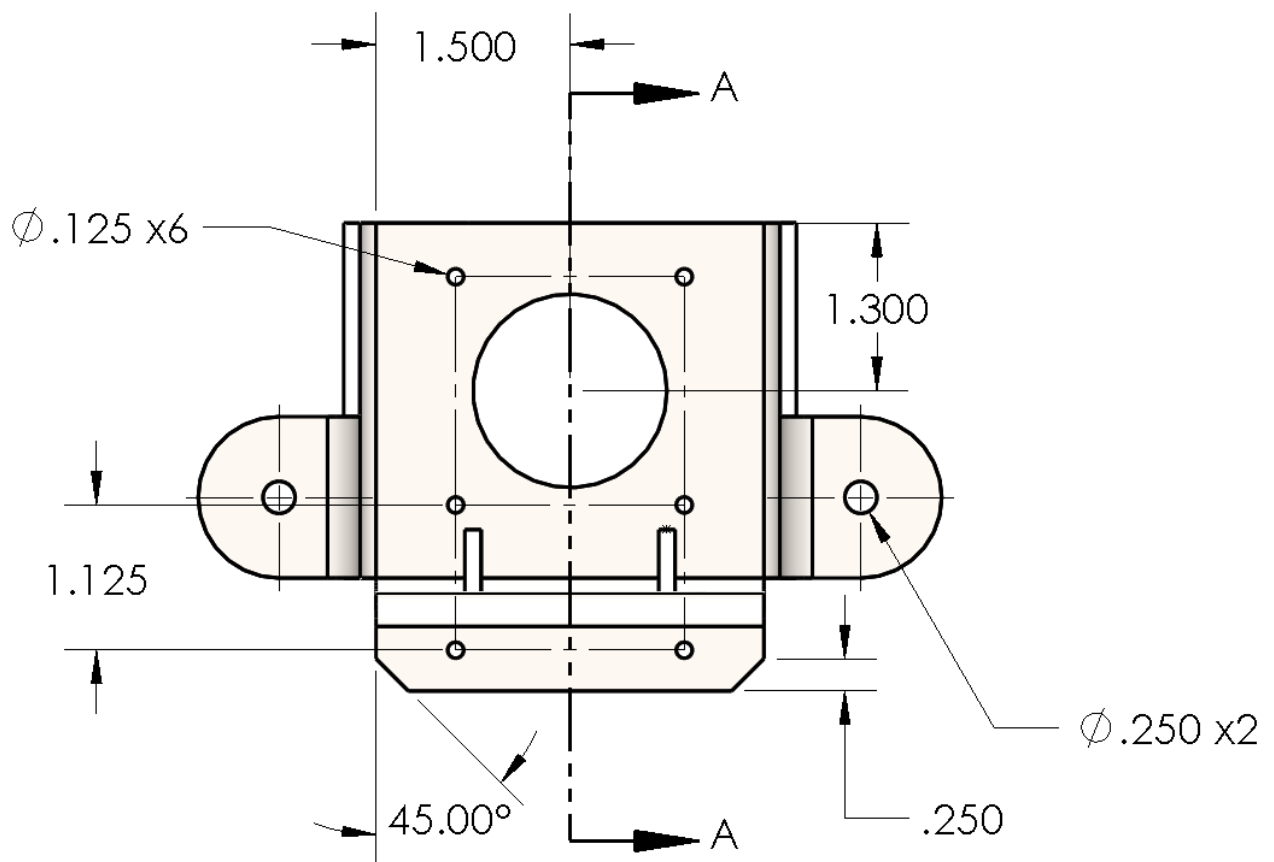


## Practice Exercise – Bracket

Basic Sheet Metal Exercises, SOLIDWORKS Sheet Metal

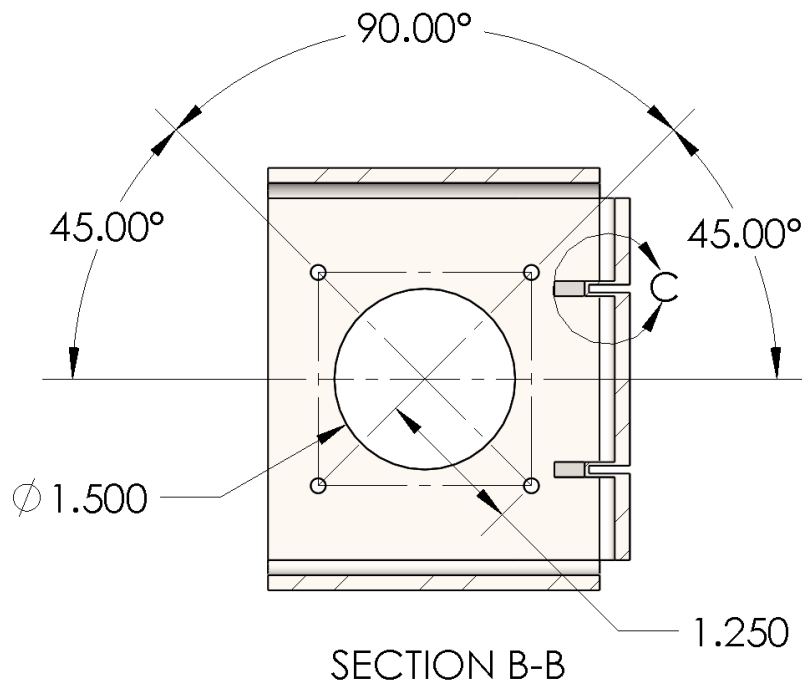
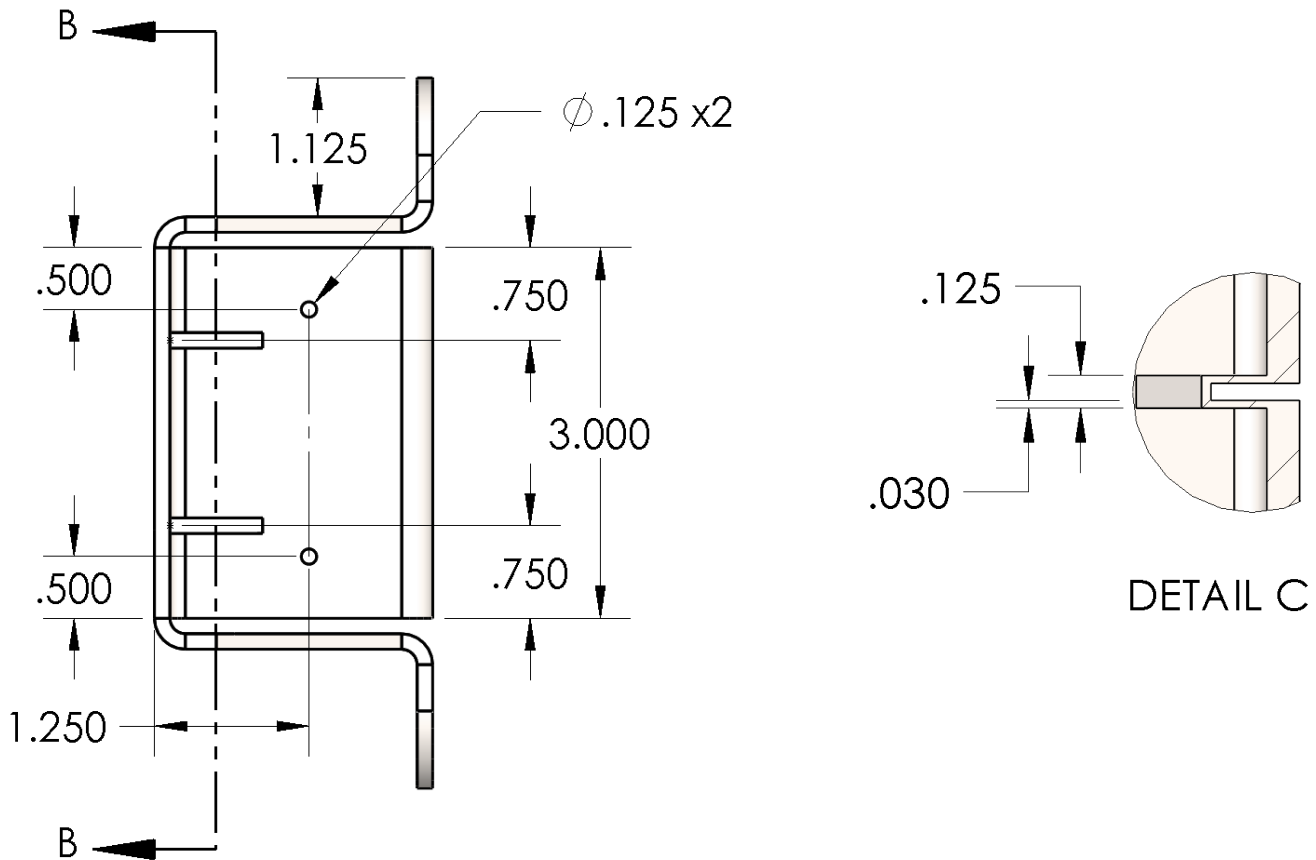


SECTION A-A



## Practice Exercise – Bracket

Basic Sheet Metal Exercises, *SOLIDWORKS* Sheet Metal



## Practice Exercise – Bracket

*Basic Sheet Metal Exercises, SOLIDWORKS Sheet Metal*

### Final Result:

If you completed the exercise successfully, your result should look like the image shown below:

